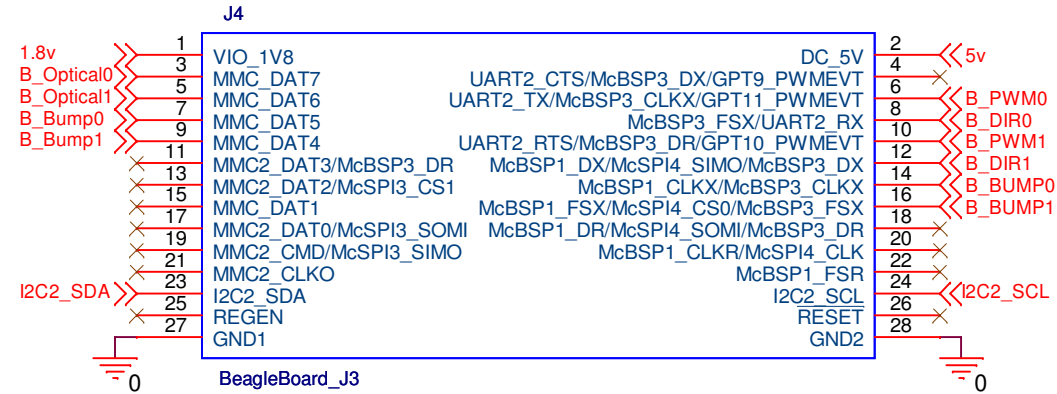
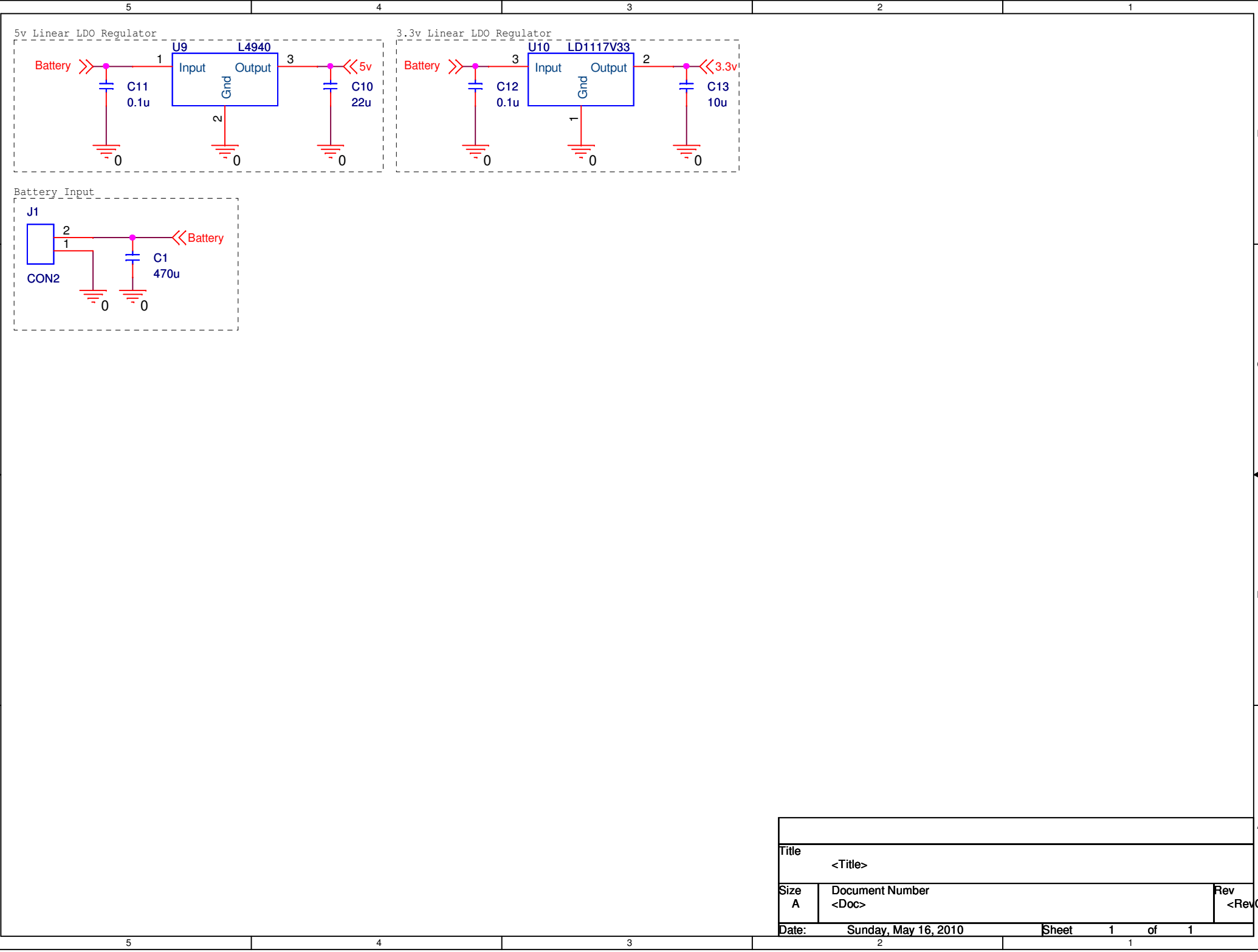


Title		<Title>	
Size	Document Number	Rev	
B	<Doc>	<RevCod	
Date:	Thursday, May 20, 2010	Sheet	1 of 1

Ensure that placement is correct so pin numbers line up with beagle board (this involves "placing" it on the bottom of the board).

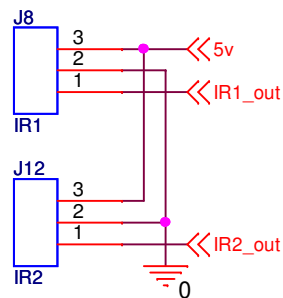


Title		
<Title>		
Size	Document Number	Rev
A	<Doc>	<RevCo
Date:	Friday, May 14, 2010	Sheet 1 of 1

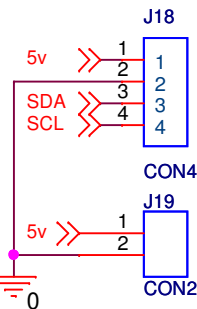


Title		
<Title>		
Size	Document Number	Rev
A	<Doc>	<RevCo
Date:	Sunday, May 16, 2010	Sheet 1 of 1

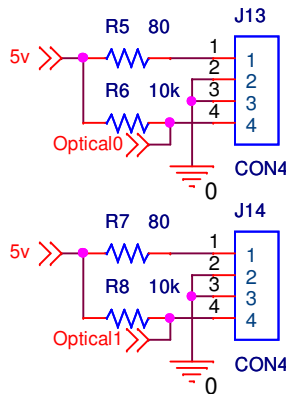
Infrared Connectors (GP2D12)



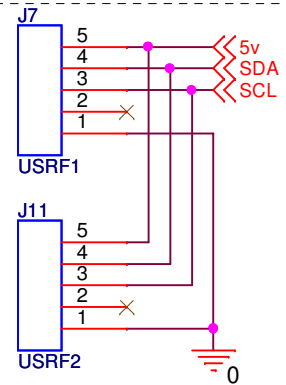
I2C and Power Header



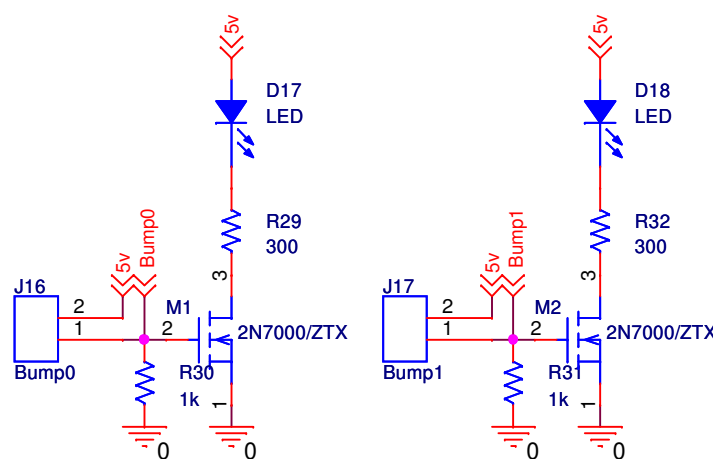
Optical Sensors



Ultrasonic connectors



Bump Sensors



Title		
<Title>		
Size	Document Number	Rev
A	<Doc>	<RevCo>

Date: Monday, May 17, 2010 Sheet 1 of 1